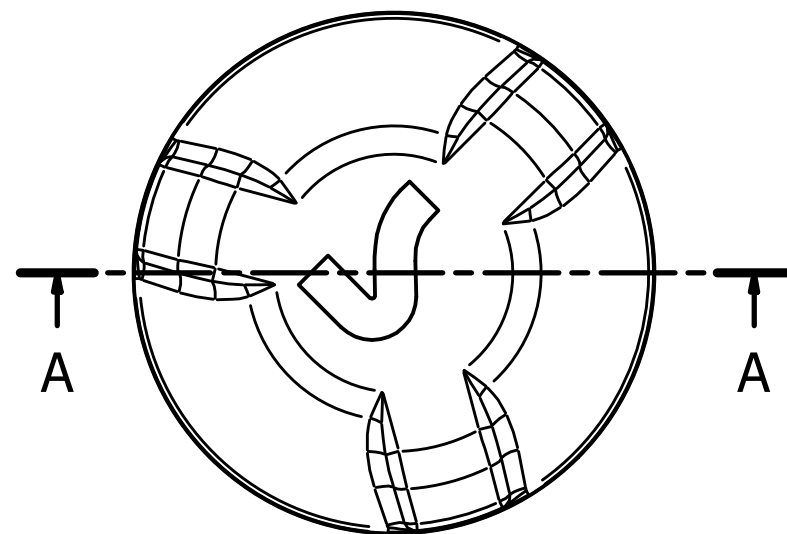


INSTALLATION

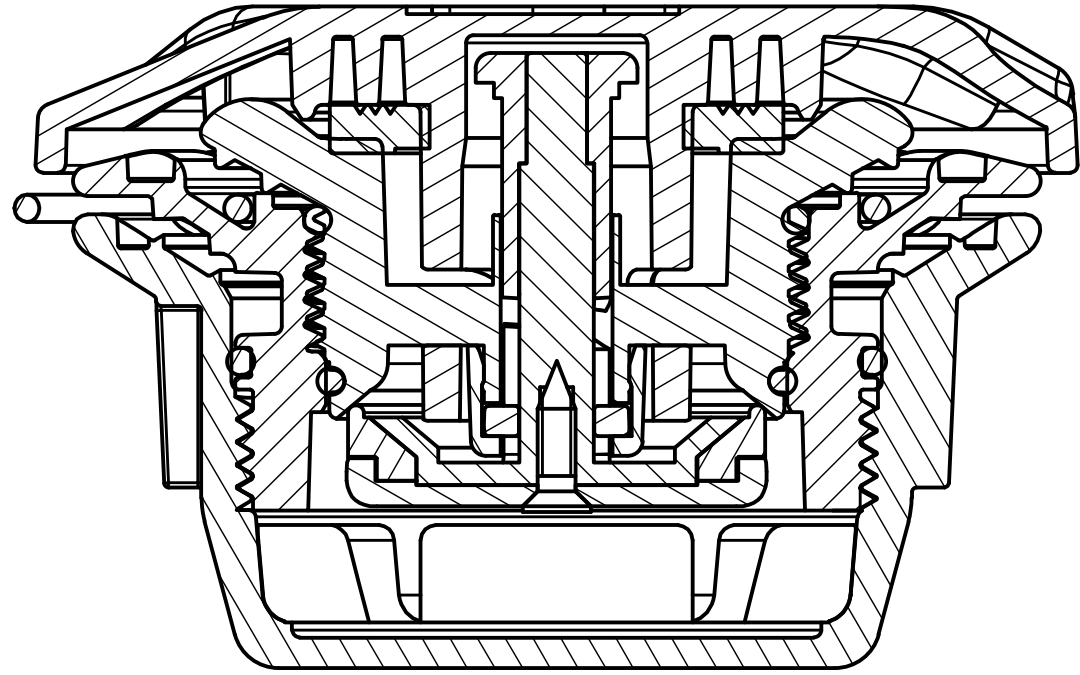
1. HOLE REQUIRED INSTALLATION = $\varnothing 43 \pm 0,5$ mm
 2. TIGHTENING TORQUE = 22 Nm
- THE VALVE ASSEMBLY SHOULD BE RE-TORQUED AFTER AT LEAST 12 HOURS
3. THE USERS RESPONSIBILITY TO ENSURE THAT ANY FLUIDS USED DURING THE INSTALLATION OR OPERATION ARE COMPATIBLE WITH THIS VALVE

PRESSURE TEST CONDUCTED IN COMPLIANCE WITH ISO STANDARD NO. 15738 2019

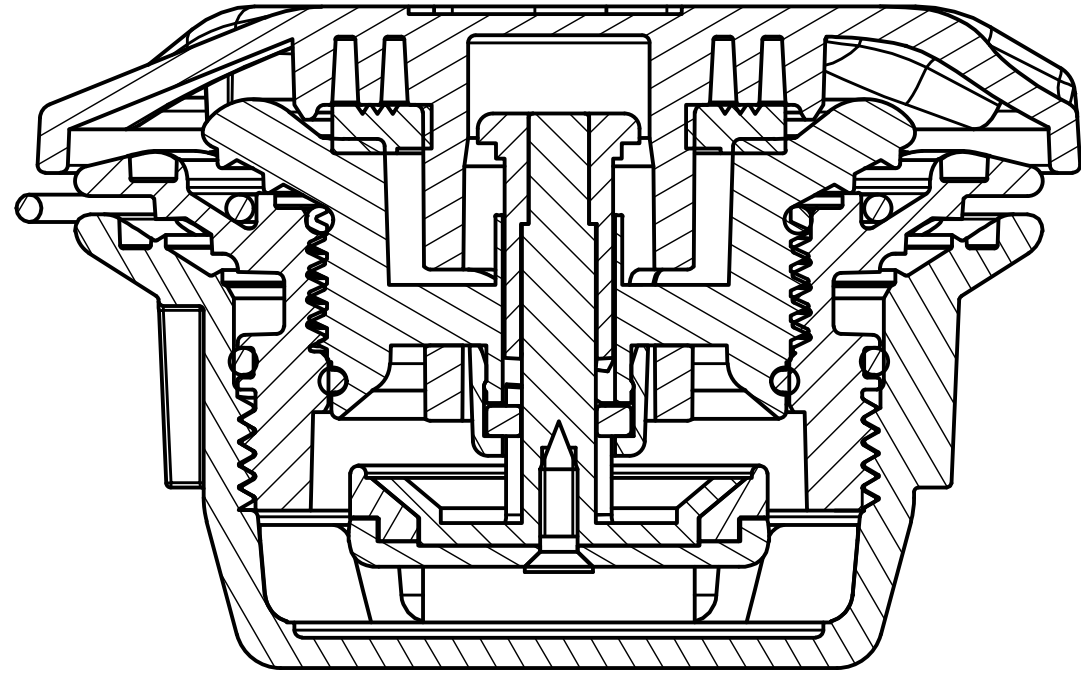




PARTS				
ELEM	QTY	P/N	DESCRIPTION	
1	1	3G1S0000	Collarino D=1,8 Di=40,4 NX Valve	
2	1	3972038	O-Ring OR2087 D=1.78 Di=21.95 NBR 70°	
3	1	5D0S0000	Tappo NX Valve - Grigio	
4	1	5D0S0005	Ghiera NX Valve	
5	1	5D0S0006	Corpo inferiore NX Valve - Grigio	
6	1	3104010	Guarnizione tappo BR2005 30.5x16.8x2.9	
8	1	WL0S0003	Gruppo valvola Mini-Valve	
7	1	3981439	Guarnizione OR2137 D=1,78 Di=34,65 NBR	
9	1	3981441	O-Ring OR2118 D=1.78 Di=29.87 NBR70	
Rev. 00	Stato Dis. Rilasciato	Per le tolleranze generali del disegno vige la normativa EN-22768-mk		
Progettato G.M.	Controllato G.M.	Scala 1:1	Data 01/04/2022	Materiale
		Valvola NX - Grigia		Massa N/A
		VG1S0000		Foglio 1 / 3

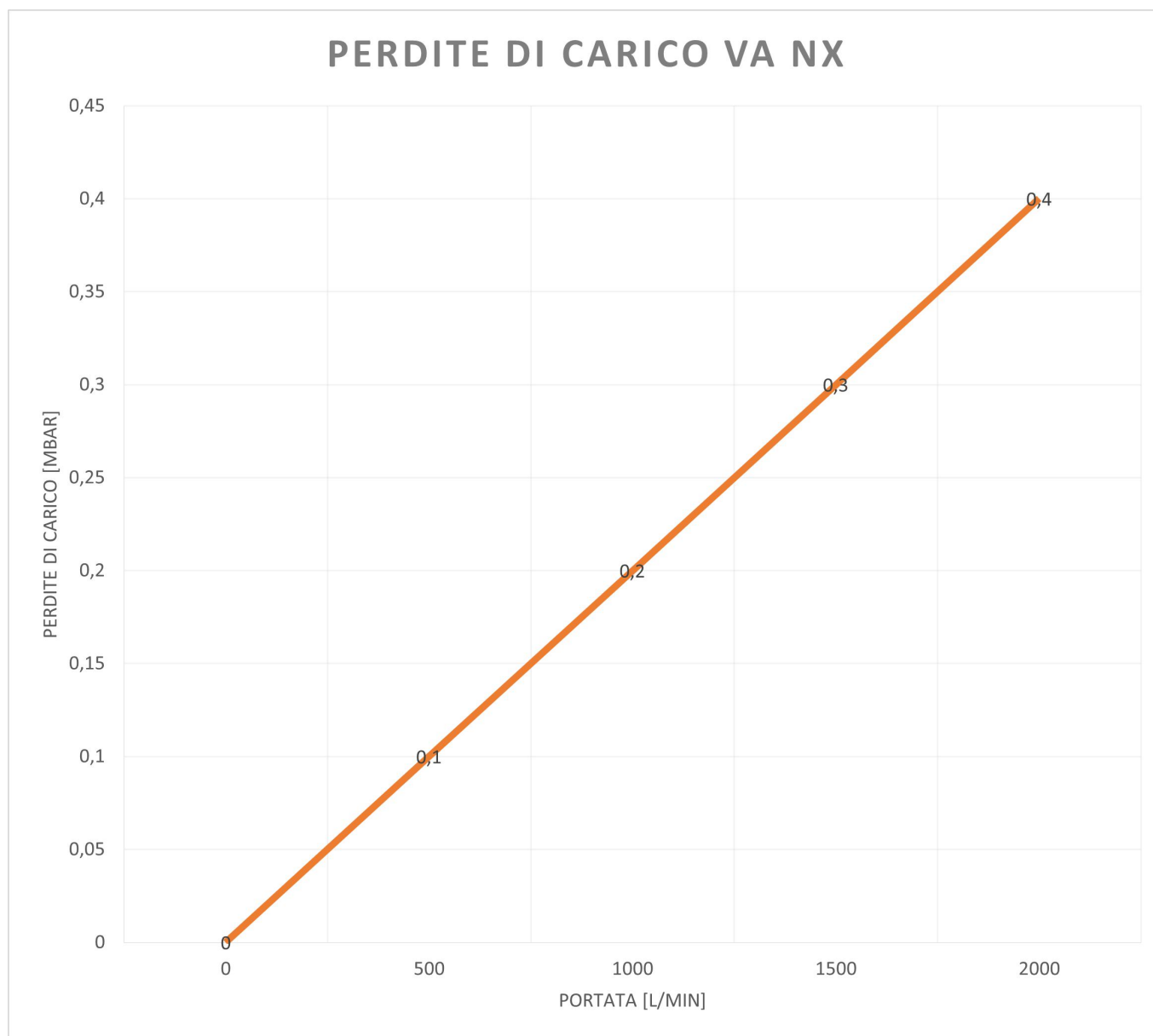
Valvola Chiusa (2 : 1)


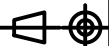


Valvola Aperta (2 : 1)



Rev. 00	Stato Dis. Rilasciato	Per le tolleranze generali del disegno vige la normativa EN-22768-mk		
Progettato G.M.	Controllato G.M.	Scala 2 : 1	Data 01/04/2022	Materiale
 SCOPREGA		Valvola NX - Grigia		Massa N/A
		VG1S0000		Foglio 2 / 3



Rev. 00	Stato Dis. Rilasciato	Per le tolleranze generali del disegno vige la normativa EN-22768-mk		
Progettato G.M.	Controllato G.M.	Scala 1 : 1	Data 01/04/2022	Materiale
 SCOPREGA		Valvola NX - Grigia		Massa N/A
		VG1S0000		 Foglio 3 / 3